

The Trojan Women

By Eurpidies



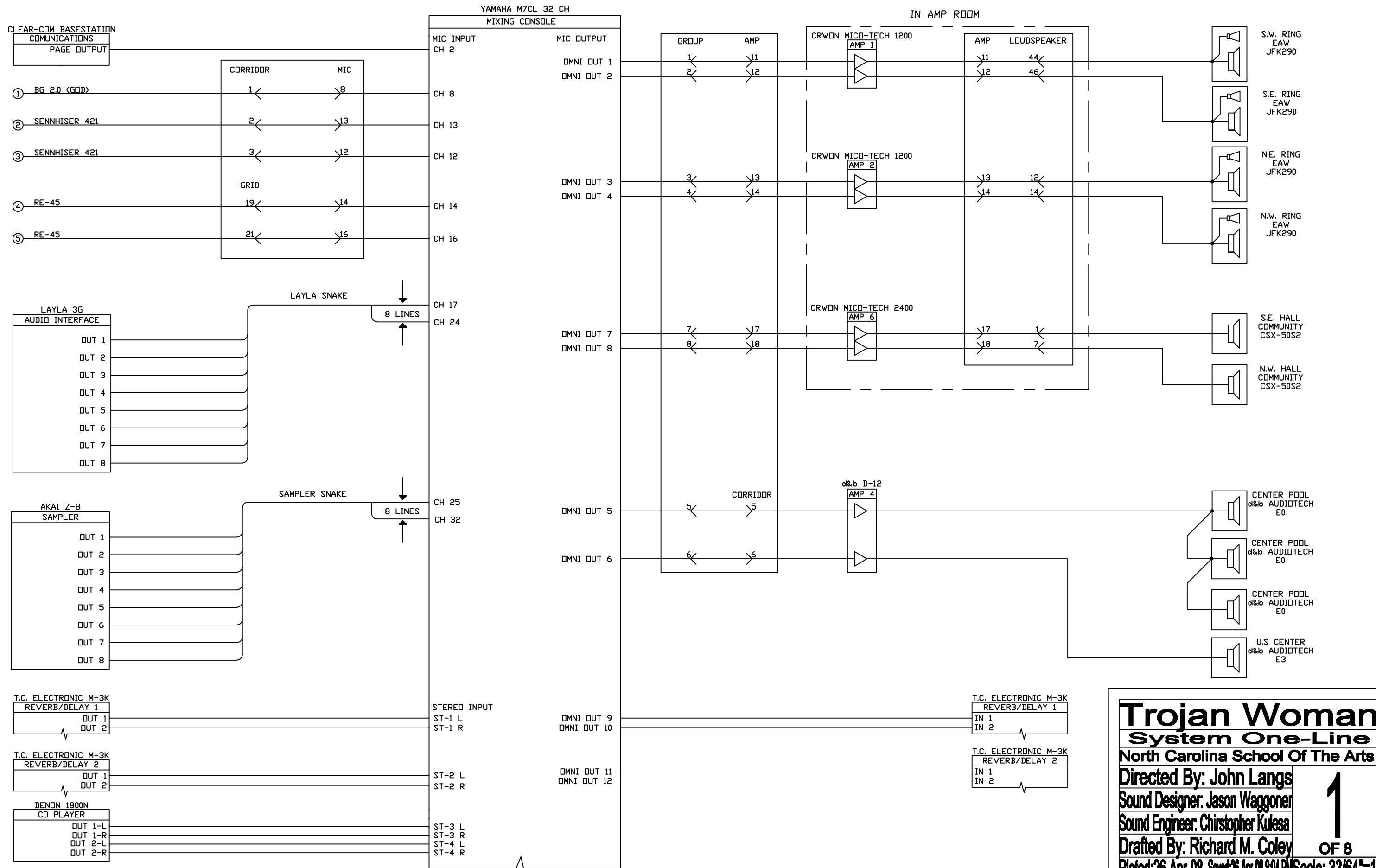
Production Sound Engineering Paperwork Package

Sound Design by Jason Waggoner
Production Sound Engineering by Christopher C. Kulesa
Drafted by Richard Coley
Mix Engineering by Leo Martin

Directed by John Langs

Load-in: April 7, 2008
Load-out: April 27, 2008

Final Look



Trojan Woman
System One-Line
 North Carolina School Of The Arts
 Directed By: John Langs
 Sound Designer: Jason Waggoner
 Sound Engineer: Christopher Kulesa
 Drafted By: Richard M. Coley

1
OF 8

Plotted: 26-Apr-08 Saved: 26-Apr-08 8:04 PM Scale: 33/64"=1"

JASON'S MACBOOK PRO
COMPUTER

RJ-45
USB

YELLOW SUBMARINE
SFX COMPUTER

D-TYPE 15
RJ-45
USB
USB

NOTE:
SFX I.P.- 169.254.201.22

M-AUDIO MIDI SPORT 2X2
USB MIDI CONVERTER

MIDI-2 OUT
MIDI-2 IN
USB

PEAVEY PC-1600Z
MIDI CONTROLER

MIDI OUT
MIDI IN

AKAI Z-8
SAMPLER

MIDI THRU
MIDI IN

LAYLA 3G

AUDIO INTERFACE

MIDI THRU
MIDI IN
D-TYPE 15

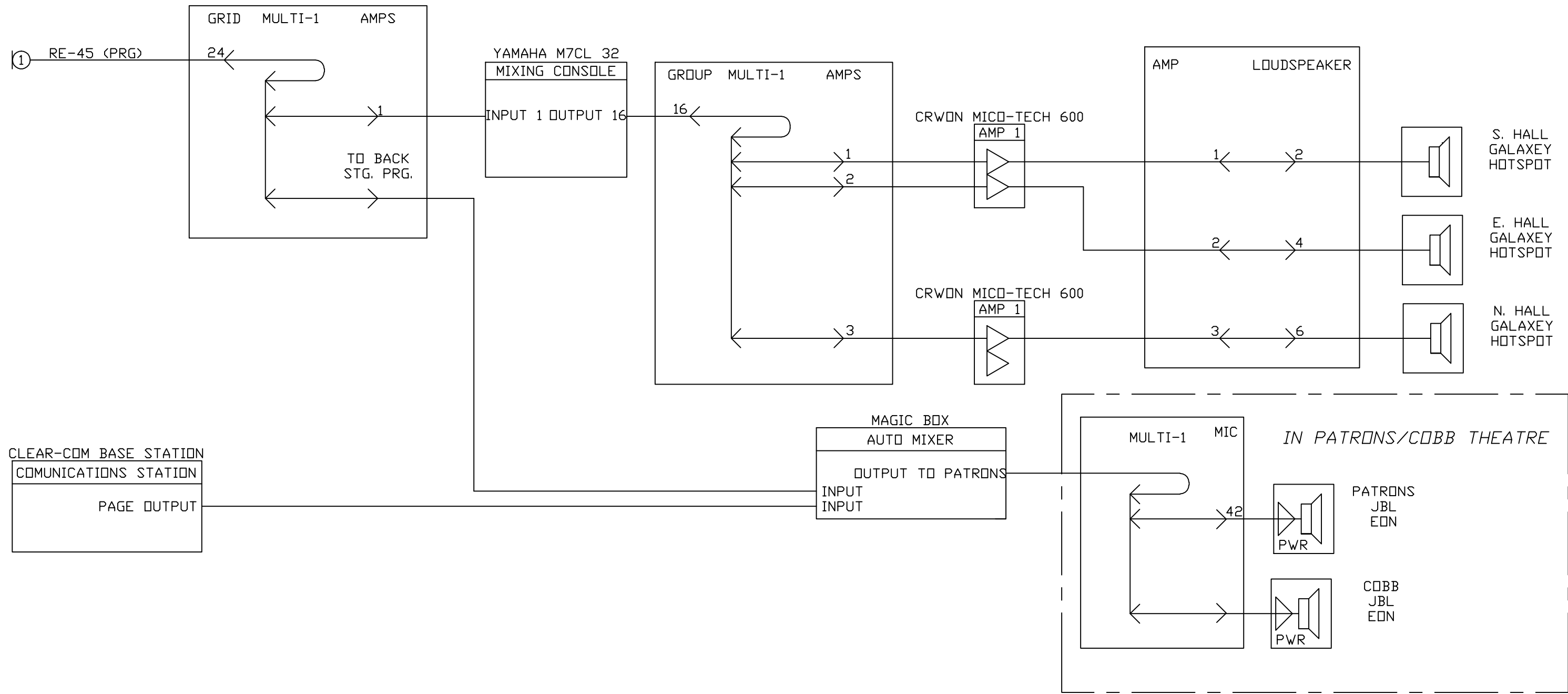
Trojan Woman

System Control One-Line
North Carolina School Of The Arts

Directed By: John Langs
Sound Designer: Jason Waggoner
Sound Engineer: Christopher Kulesa
Drafted By: Richard M. Coley

2
OF 8

Plotted: 26-Apr-08 Saved: 26-Apr-08 8:33 PM Scale: xx=xx



Trojan Woman
Monitor One-Line
 North Carolina School Of The Arts
 Directed By: John Langs
 Sound Designer: Jason Waggoner
 Sound Engineer: Christopher Kulesa
 Drafted By: Richard M. Coley
 Plotted: 26-Apr-08 Saved: 26-Apr-08 8:27 PM Scale: 33/64"=1'

3
OF 8

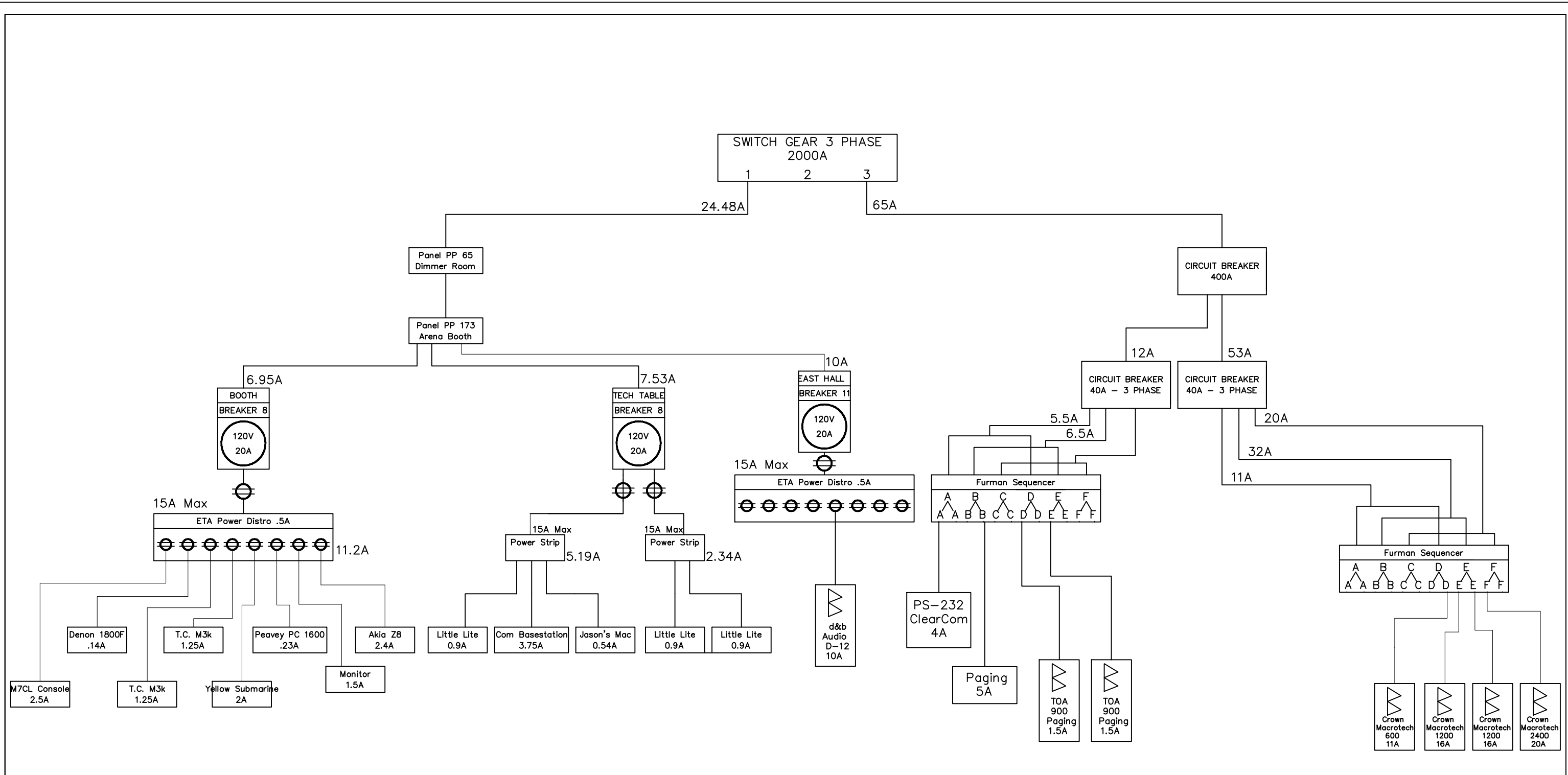
XLR/M	XLR/F	GROUP 1	HOUSE WIRING	GROUP 1	XLR/M	XLR/F	PATCH CABLE	XLR/M	XLR/F	AMP 13	HOUSE WIRING	AMP 13	XLR/M	XLR/F	INPUT 1	
XLR/M	XLR/F	GROUP 2	HOUSE WIRING	GROUP 2	XLR/M	XLR/F	PATCH CABLE	XLR/M	XLR/F	AMP 14	HOUSE WIRING	AMP 14	XLR/M	XLR/F	INPUT 2	
XLR/M	XLR/F	GROUP 3	HOUSE WIRING	GROUP 3	XLR/M	XLR/F	PATCH CABLE	XLR/M	XLR/F	AMP 15	HOUSE WIRING	AMP 15	XLR/M	XLR/F	INPUT 1	
XLR/M	XLR/F	GROUP 4	HOUSE WIRING	GROUP 4	XLR/M	XLR/F	PATCH CABLE	XLR/M	XLR/F	AMP 16	HOUSE WIRING	AMP 16	XLR/M	XLR/F	INPUT 2	
XLR/M	XLR/F	GROUP 5	HOUSE WIRING	GROUP 5	XLR/M	XLR/F	PATCH CABLE	XLR/M	XLR/F	TURNAROUND		XLR/F	XLR/M	CORD 4	HOUSE WIRING	CORD 4
XLR/M	XLR/F	GROUP 6	HOUSE WIRING	GROUP 6	XLR/M	XLR/F	PATCH CABLE	XLR/M	XLR/F	TURNAROUND		XLR/F	XLR/M	CORD 5	HOUSE WIRING	CORD 5
XLR/M	XLR/F	GROUP 7	HOUSE WIRING	GROUP 7	XLR/M	XLR/F	PATCH CABLE	XLR/M	XLR/F	AMP 17	HOUSE WIRING	AMP 17	XLR/M	XLR/F	INPUT 1	
XLR/M	XLR/F	GROUP 8	HOUSE WIRING	GROUP 8	XLR/M	XLR/F	PATCH CABLE	XLR/M	XLR/F	AMP 18	HOUSE WIRING	AMP 18	XLR/M	XLR/F	INPUT 2	
XLR/M	XLR/F	LOCAL CABLE		XLR/M	XLR/F	INPUT 1-L	T.C. ELECTRONICS M3000-1									
XLR/M	XLR/F	LOCAL CABLE		XLR/M	XLR/F	INPUT 1-R										
XLR/M	XLR/F	LOCAL CABLE		XLR/M	XLR/F	INPUT 2-L	T.C. ELECTRONICS M3000-2									
XLR/M	XLR/F	LOCAL CABLE		XLR/M	XLR/F	INPUT 2-R										
XLR/M																
XLR/M																
XLR/M																
XLR/M																

CROWN MICRO-TECH 1200	OUTPUT 1	TERMINAL BLOCK	BANANA PLUG	HOUSE WIRING	AMP 13	NL4/F	NL4/M	PATCH CABLE	NL4/M	NL4/F	SPK 44	HOUSE WIRING	SPK 44	
	OUTPUT 2	TERMINAL BLOCK	BANANA PLUG	HOUSE WIRING	AMP 14	NL4/F	NL4/M	PATCH CABLE	NL4/M	NL4/F	SPK 46	HOUSE WIRING	SPK 46	
CROWN MICRO-TECH 1200	OUTPUT 1	TERMINAL BLOCK	BANANA PLUG	HOUSE WIRING	AMP 15	NL4/F	NL4/M	PATCH CABLE	NL4/M	NL4/F	SPK 12	HOUSE WIRING	SPK 12	
	OUTPUT 2	TERMINAL BLOCK	BANANA PLUG	HOUSE WIRING	AMP 16	NL4/F	NL4/M	PATCH CABLE	NL4/M	NL4/F	SPK 14	HOUSE WIRING	SPK 14	
	XLR/F	XLR/M	LOCAL CABLE	XLR/F	XLR/M	INPUT 1 LINK	d&b Audio D-12	OUTPUT 1	NL4/F	NL4/M	LOCAL CABLE	NL4/M	NL4/F	INPUT
	XLR/F	XLR/M	LOCAL CABLE	XLR/F	XLR/M	INPUT 2 LINK		OUTPUT 2	NL4/F	NL4/M	LOCAL CABLE	NL4/M	NL4/F	INPUT
CROWN MICRO-TECH 2400	OUTPUT 1	TERMINAL BLOCK	BANANA PLUG	HOUSE WIRING	AMP 17	NL4/F	NL4/M	PATCH CABLE	NL4/M	NL4/F	SPK 1	HOUSE WIRING	SPK 1	
	OUTPUT 2	TERMINAL BLOCK	BANANA PLUG	HOUSE WIRING	AMP 18	NL4/F	NL4/M	PATCH CABLE	NL4/M	NL4/F	SPK 7	HOUSE WIRING	SPK 7	

NEMA L5-15/M	NEMA L5-15/F	LOCAL CABLE	NL4/M	NL4/F	TURNAROUND	NL4/F	NL4/M	LOCAL CABLE	NL4/M	NL4/F	INPUT	EAW JFK290-1				
NEMA L5-15/M	NEMA L5-15/F	LOCAL CABLE	NL4/M	NL4/F	TURNAROUND	NL4/F	NL4/M	LOCAL CABLE	NL4/M	NL4/F	INPUT	EAW JFK290-2				
NEMA L5-15/M	NEMA L5-15/F	LOCAL CABLE	NL4/M	NL4/F	TURNAROUND	NL4/F	NL4/M	LOCAL CABLE	NL4/M	NL4/F	INPUT	EAW JFK290-3				
NEMA L5-15/M	NEMA L5-15/F	LOCAL CABLE	NL4/M	NL4/F	TURNAROUND	NL4/F	NL4/M	LOCAL CABLE	NL4/M	NL4/F	INPUT	EAW JFK290-4				
d&b Audio E0	OUTPUT	NL4/F	NL4/M	LOCAL	NL4/M	NL4/F	INPUT	d&b Audio E0	OUTPUT	NL4/F	NL4/M	LOCAL CABLE	NL4/M	NL4/F	INPUT	d&b Audio E0
d&b Audio E3																
NEMA L5-15/M	NEMA L5-15/F	LOCAL CABLE	NL4/M	NL4/F	TURNAROUND	NL4/F	NL4/M	LOCAL CABLE	NL4/M	NL4/F	INPUT	COMMUNITY CSX-50S2				
NEMA L5-15/M	NEMA L5-15/F	LOCAL CABLE	NL4/M	NL4/F	TURNAROUND	NL4/F	NL4/M	LOCAL CABLE	NL4/M	NL4/F	INPUT	COMMUNITY CSX-50S2				

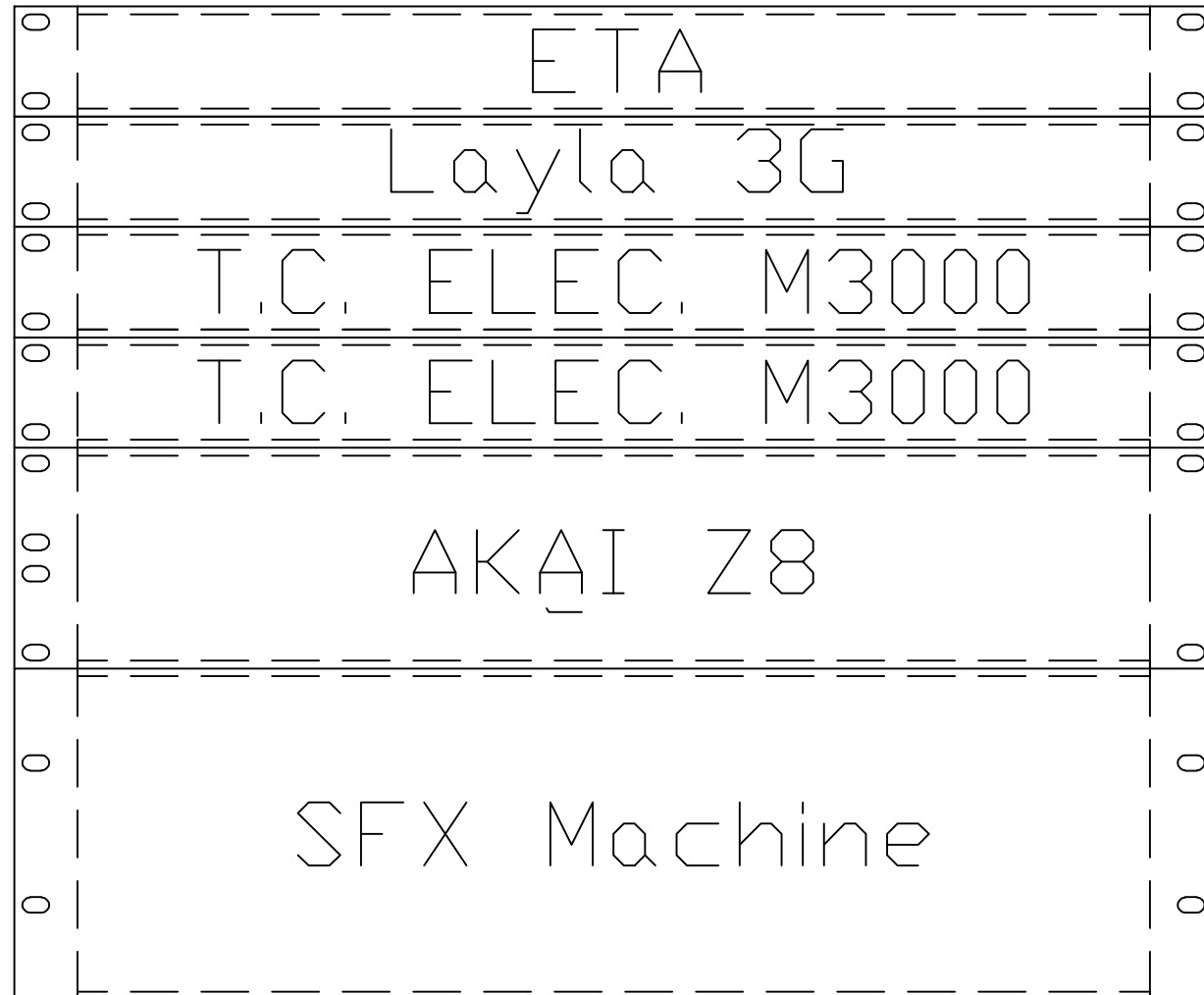
Trojan Woman
System Patch Plot
North Carolina School Of The Arts
Directed By: John Langs
Sound Designer: Jason Waggoner
Sound Engineer: Christopher Kulesa
Drafted By: Richard M. Coley
Plotted: 4-Apr-08 Saved: 4-Apr-08 3:15 PM Scale: 33/64"=1"

4b
OF 8



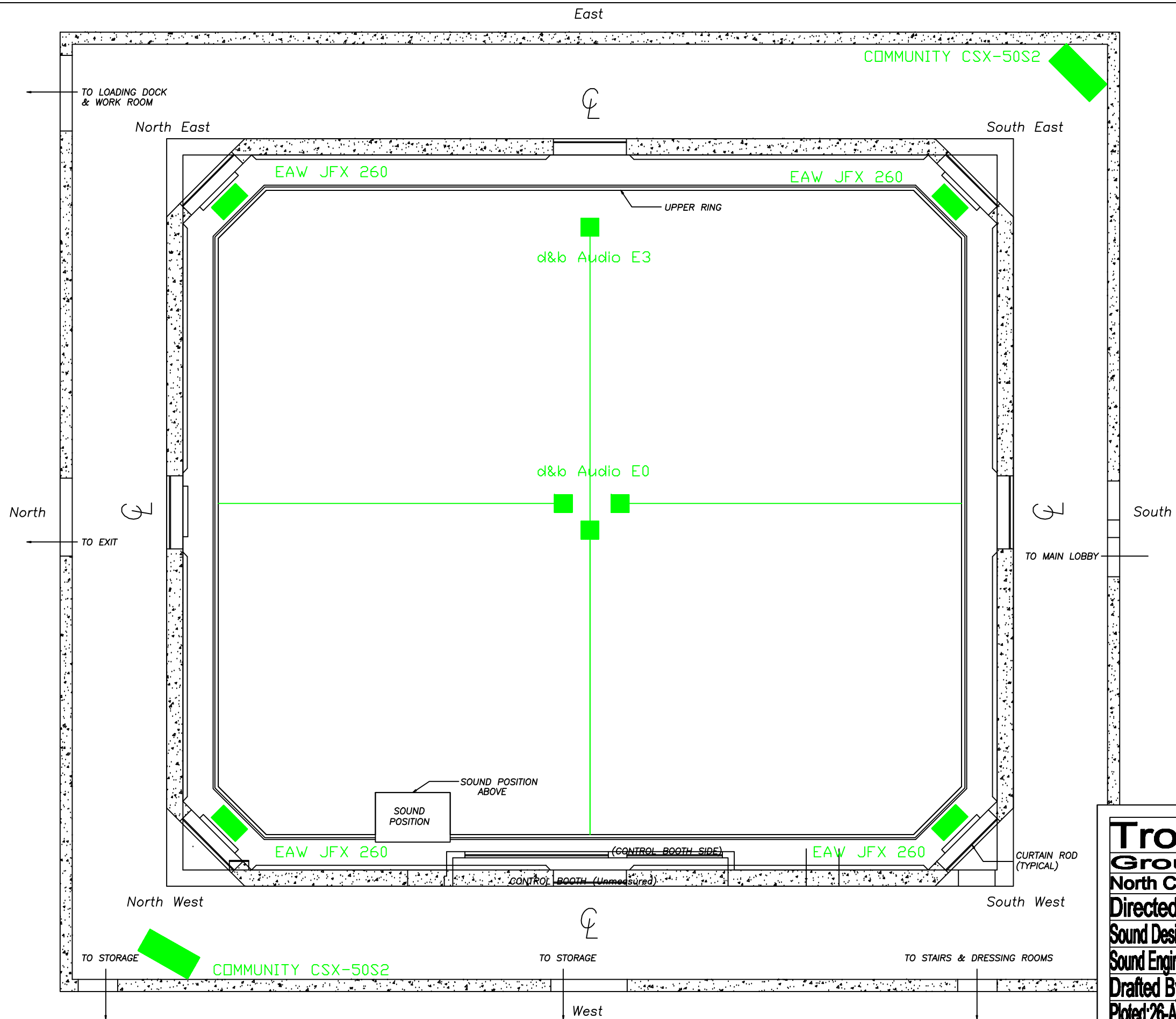
Trojan Woman
Power Diagram
 North Carolina School Of The Arts
 Directed By: John Langs
 Sound Designer: Jason Waggoner
 Sound Engineer: Christopher Kulesa
 Drafted By: Richard M. Coley
 Plotted: 4-Apr-08 Saved: 4-Apr-08 4:37 PM Scale: 33/64"=1"

Processing and Playback



d&b AMP RACK

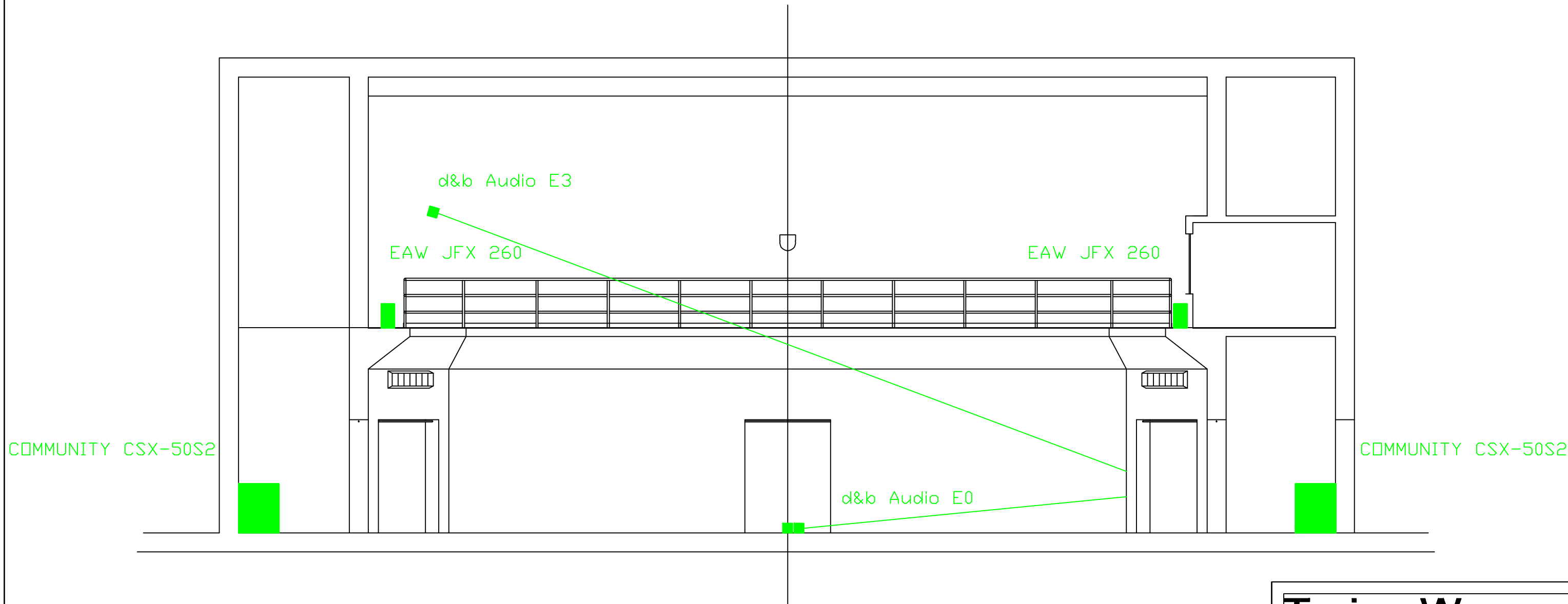




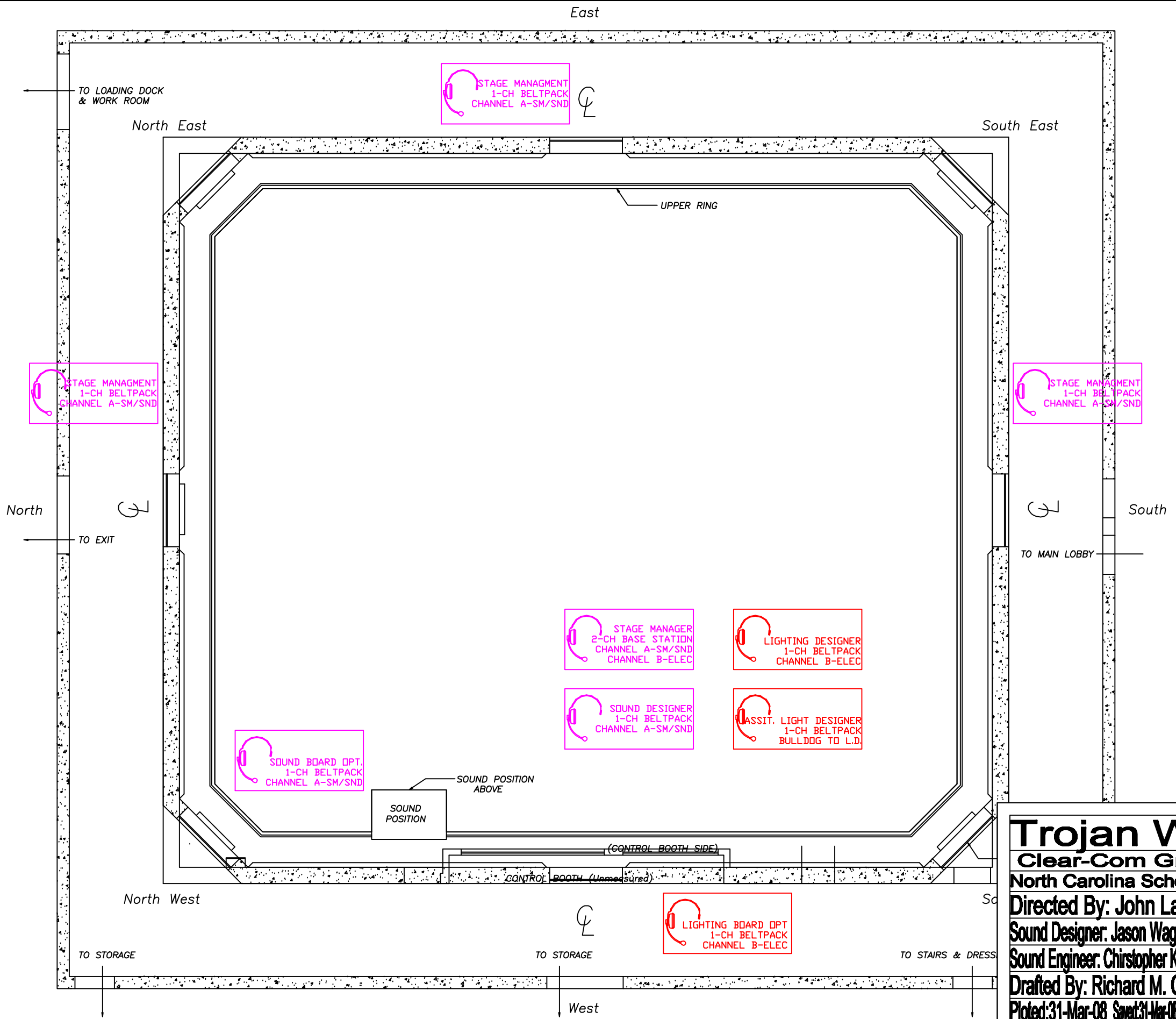
Trojan Woman
Ground Plan View
 North Carolina School Of The Arts

Directed By: John Langs	6 OF 8
Sound Designer: Jason Waggoner	
Sound Engineer: Christopher Kulesa	
Drafted By: Richard M. Coley	

Plotted: 26-Apr-08 Saved: 26-Apr-08 8:29 PM Scale: 33/64"=1'



Trojan Woman	
Section Plan View	
North Carolina School Of The Arts	
Directed By: John Langs	7 OF 8
Sound Designer: Jason Waggoner	
Sound Engineer: Christopher Kulesa	
Drafted By: Richard M. Coley	
Plotted: 26-Apr-08 Saved: 26-Apr-08 8:31 PM Scale: 33/64"=1'	



THE PATRONS
 DRESSING ROOM
 1-CH SQUAK BOX
 CHANNEL A-SM/SND

THE COBB
 DRESSING ROOM
 1-CH SQUAK BOX
 CHANNEL A-SM/SND

STAGE MANAGMENT
 1-CH BELTPACK
 CHANNEL A-SM/SND

STAGE MANAGMENT
 1-CH BELTPACK
 CHANNEL A-SM/SND

STAGE MANAGMENT
 1-CH BELTPACK
 CHANNEL A-SM/SND

SOUND BOARD OPT.
 1-CH BELTPACK
 CHANNEL A-SM/SND

STAGE MANAGER
 2-CH BASE STATION
 CHANNEL A-SM/SND
 CHANNEL B-ELEC

LIGHTING DESIGNER
 1-CH BELTPACK
 CHANNEL B-ELEC

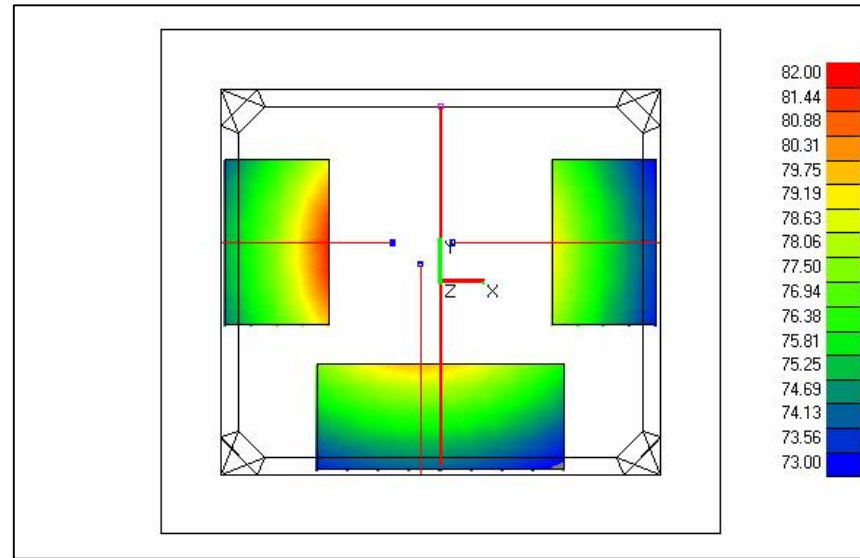
SOUND DESIGNER
 1-CH BELTPACK
 CHANNEL A-SM/SND

ASSIT. LIGHT DESIGNER
 1-CH BELTPACK
 BULLDOG TO L.D.

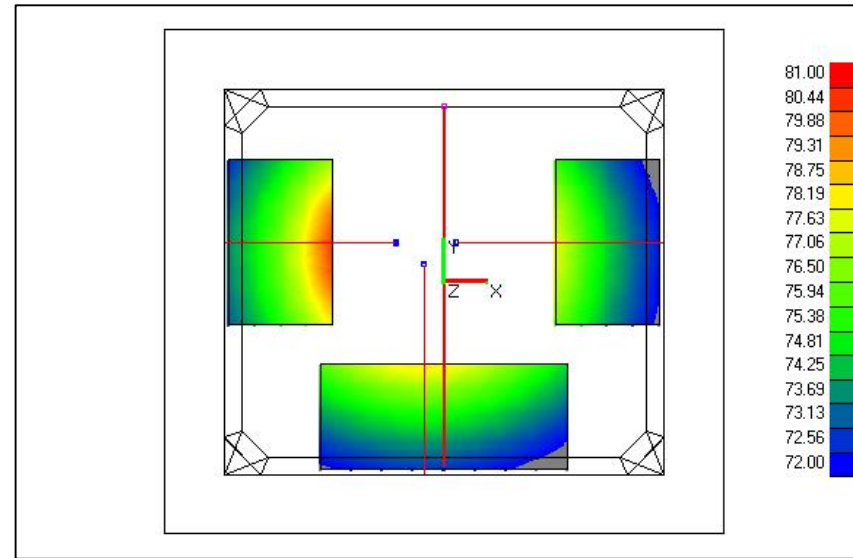
LIGHTING BOARD OPT
 1-CH BELTPACK
 CHANNEL B-ELEC

Trojan Woman
Clear-Com Ground Plan
 North Carolina School Of The Arts
 Directed By: John Langs
 Sound Designer: Jason Waggoner
 Sound Engineer: Christopher Kulesa
 Drafted By: Richard M. Coley
 Plotted: 31-Mar-08 Saved: 31-Mar-08 4:13 PM Scale: 33/64"=1'

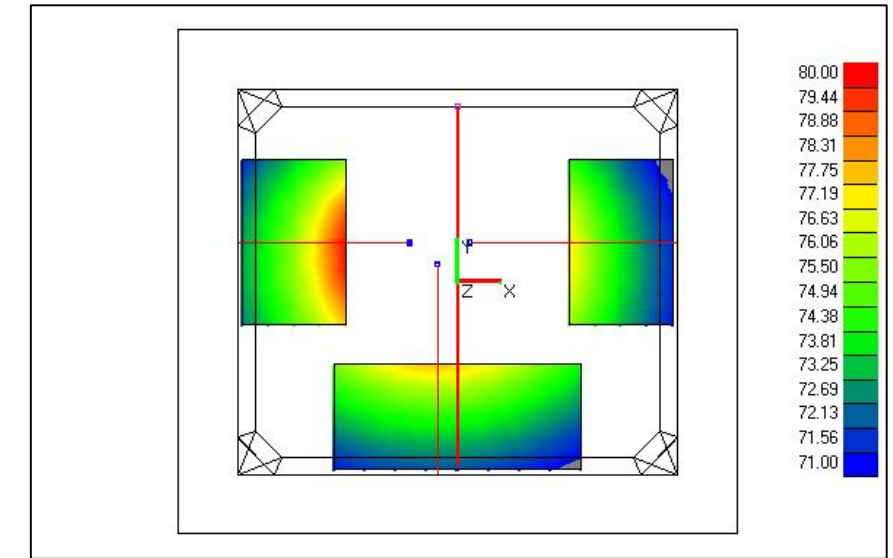
125Hz



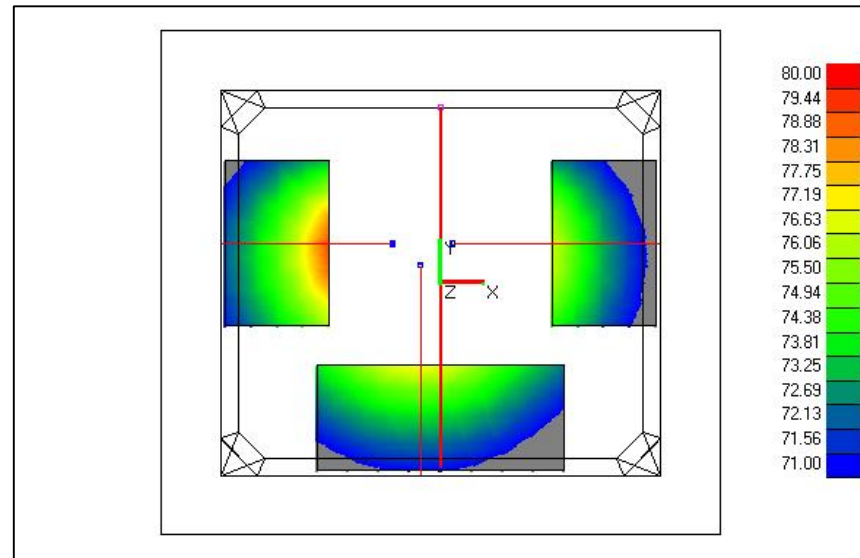
250Hz



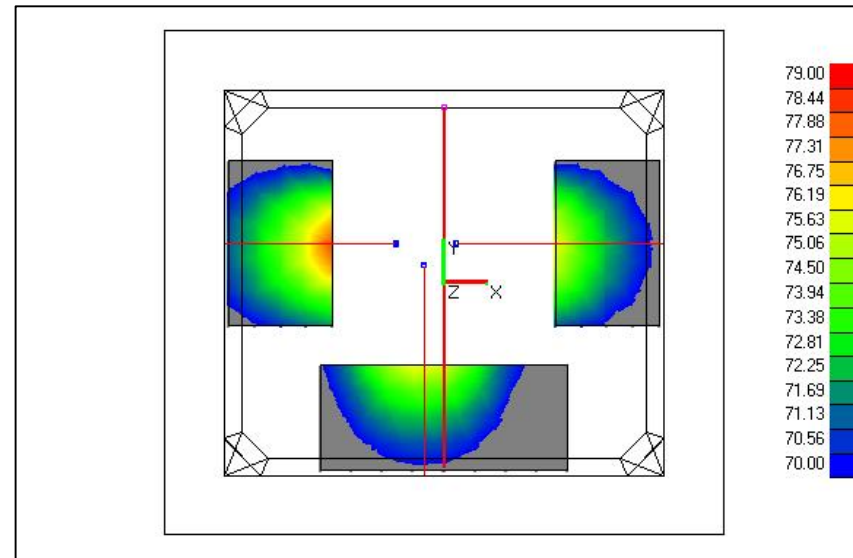
500Hz



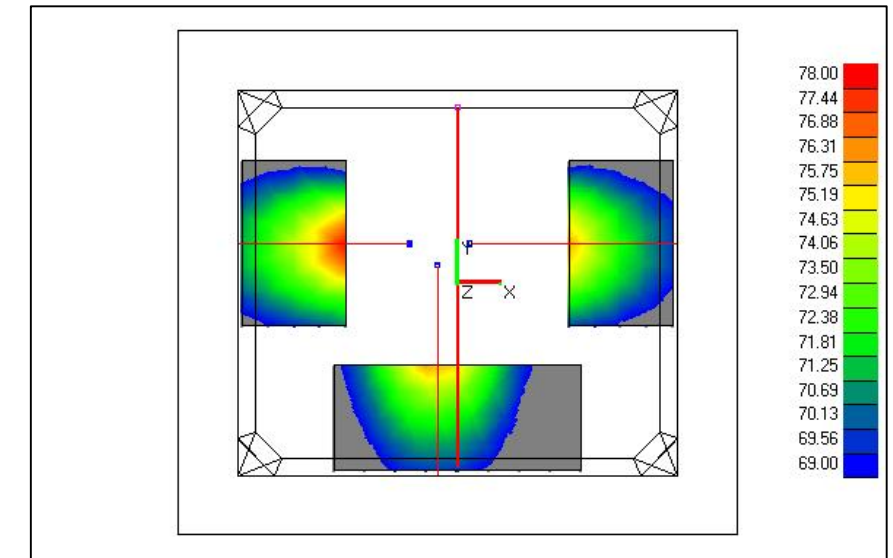
1kHz



2kHz



4kHz



Deck @ 125Hz Min: 72.7 Max: 81.7
 Deck @ 250Hz Min: 71.2 Max: 80.5
 Deck @ 500Hz Min: 70.5 Max: 80.0
 Deck @ 1000Hz Min: 69.3 Max: 79.2
 Deck @ 2000Hz Min: 66.1 Max: 78.3
 Deck @ 4000Hz Min: 64.8 Max: 78.0

Trojan Woman
LARA DATA EO
 North Carolina School Of The Arts
 Directed By: John Langs
 Sound Designer: Jason Waggoner
 Sound Engineer: Christopher Kulesa
 Drafted By: Richard M. Coley
 Plotted: 4-Apr-08 Saved: 4-Apr-08 3:42 PM Scale: 33/64"=1"

Top Level System Definition

Cabinet/Cluster	Nominal SPL	Peak SPL	Headroom	Power(Av/Pk)	Mass
Total for System	.	.	.	0.0/0.1	32.5

Cabinet/Cluster	Nominal SPL	Peak SPL	Headroom	Power(Av/Pk)	Mass
North - Stage Right	90.0	100.0	27.0	0.0/0.0	5.5
West - Stage Center	90.0	100.0	27.0	0.0/0.0	5.5
South - Stage Left	90.0	100.0	27.0	0.0/0.0	5.5
East Rail to West	90.0	100.0	33.0	0.0/0.0	16.0

Cabinet/Cluster Aim Points

Cabinet/Cluster	Surface	X	Y	Z	Distance
North - Stage Right	9	-33.49	5.85	10.53	27.64
West - Stage Center	14	-3.00	-29.41	10.51	32.99
South - Stage Left	13	33.49	5.85	10.32	32.70
East Rail to West	43	0.00	-28.31	9.92	55.04

All loudspeaker SPL values are measured at **1m**

All masses are expressed in **lb**

All dimensions are in **feet**

Loudspeakers & Accessories				
QTY.	ITEM	SUPPLIER	DATE OUT	DATE IN
4	EAW JFX 260	SHOP	Apr 7, 2008	Apr 29, 2008
2	COMMUNITY CSX-50S2	SHOP	Apr 7, 2008	Apr 29, 2008
3	d&b audiotechnik E-0	SHOP	Apr 7, 2008	Apr 29, 2008
1	d&b audiotechnik E-3	SHOP	Apr 7, 2008	Apr 29, 2008
3	GALAXY HOT SPOT	SHOP	Apr 7, 2008	Apr 29, 2008
2	JBL EON w/ Mounting stick	SHOP	Apr 7, 2008	Apr 29, 2008
1	d&b audiotechnik E-3 Pipe Clamp	SHOP	Apr 7, 2008	Apr 29, 2008
2	Mounting Sticks for JBL Eon	SHOP	Apr 7, 2008	Apr 29, 2008
Amplifiers				
QTY.	ITEM	NOTES	DATE OUT	DATE IN
2	CROWN MICRO-TECH 1200	IN SPACE	Apr 7, 2008	Apr 29, 2008
1	CROWN MICRO-TECH 600	IN SPACE	Apr 7, 2008	Apr 29, 2008
1	CROWN MICRO-TECH 2400	IN SPACE	Apr 7, 2008	Apr 29, 2008
1	d&b audiotechnik D-12	SHOP	Apr 7, 2008	Apr 29, 2008
Console				
QTY.	ITEM	NOTES	DATE OUT	DATE IN
1	32 CH YAMAHA M7CL	House	Apr 7, 2008	Apr 29, 2008
Playback				
QTY.	ITEM	NOTES	DATE OUT	DATE IN
1	SFX COMPUTER - YELLOW SUBMARINE	SHOP	Apr 1, 2008	Apr 29, 2008
	- 1 MOUSE	SHOP	Apr 1, 2008	Apr 29, 2008
	- 1 KEYBOARD	SHOP	Apr 1, 2008	Apr 29, 2008
	- 1 LCD MONITOR w/ power supply & VGA - cable	SHOP	Apr 1, 2008	Apr 29, 2008
	- 1 echo Layla 3G PCI card, installed	SHOP	Apr 1, 2008	Apr 29, 2008
1	PEVEY PC-1600X	SHOP	Apr 7, 2008	Apr 29, 2008
	-POWER SUPPLY	SHOP	Apr 7, 2008	Apr 29, 2008
1	AKAI Z8	SHOP	Apr 1, 2008	Apr 29, 2008
	-include IEC power cable	SHOP		
1	DENNON DN-1800F	SHOP	Apr 7, 2008	Apr 29, 2008
	- 1 DENNON DN-1800F REMOTE INTERFACE	SHOP	Apr 7, 2008	Apr 29, 2008
1	ECHO LAYAL 3G	SHOP	Apr 1, 2008	Apr 29, 2008
1	M-AUDIO MIDI SPORT 2X2	SHOP	Apr 1, 2008	Apr 29, 2008
1	10RU Rack w/ dolly for transport	SHOP	Apr 7, 2008	Apr 29, 2008
1	4RU Rack	SHOP	Apr 7, 2008	Apr 29, 2008
1	4RU Rack to transport to space	SHOP	Apr 7, 2008	Apr 29, 2008
2	Stands for Hot Spots	SHOP	Apr 7, 2008	Apr 29, 2008

Processing				
QTY.	ITEM	NOTES	DATE OUT	DATE IN
2	T.C. ELETRONICS M-3000 w/ power supply	SHOP	Apr 7, 2008	Apr 29, 2008
Power & Light				
QTY.	ITEM	NOTES	DATE OUT	DATE IN
2	ETA PD8L	SHOP	Apr 7, 2008	Apr 29, 2008
5	LITTLE LITES	SHOP	Apr 7, 2008	Apr 29, 2008
Microphones				
QTY.	ITEM	NOTES	DATE OUT	DATE IN
1	SENNHISER 421	SHOP	Apr 7, 2008	Apr 29, 2008
	- 1 MICROPHONE CLIP			
3	AKG RE-45	SHOP	Apr 7, 2008	Apr 29, 2008
	- 3 MICROPHONE CLIPS			
1	SHURE BG 2.0 w/ Switch	SHOP	Apr 7, 2008	Apr 29, 2008
3	Desktop MICROPHONE STANDS	SHOP	Apr 7, 2008	Apr 29, 2008
Cable				
QTY.	ITEM	NOTES	DATE OUT	DATE IN
6	TURNAROUND XLR/F TO XLR/F	SHOP	Apr 7, 2008	Apr 29, 2008
13	PATCH CABLE XLR/M TO XLR/F	IN SPACE	Apr 7, 2008	Apr 29, 2008
14	15' XLR/M TO XLR/F	SHOP	Apr 7, 2008	Apr 29, 2008
6	25' XLR/M TO XLR/F	SHOP	Apr 7, 2008	Apr 29, 2008
5	50' XLR/M TO XLR/F	SHOP	Apr 7, 2008	Apr 29, 2008
2	50' or greater XLR/M to XLR/F	SHOP	Apr 7, 2008	Apr 29, 2008
2	8-CH SNAKE XLR/M TO TRS-1/4"/M	SHOP	Apr 7, 2008	Apr 29, 2008
	-NEEDS TO FAN OUT ON BOTH ENDS			
4	10' XLR/M TO RCA/M	SHOP	Apr 7, 2008	Apr 29, 2008
2	5 PIN DIN/M TO XLR/M	LAB	Apr 7, 2008	Apr 29, 2008
2	5 PIN DIN/M TO XLR/F	LAB	Apr 7, 2008	Apr 29, 2008
4	5 PIN DIN/M TO 5 PIN DIN/M (MIDI)	SHOP	Apr 7, 2008	Apr 29, 2008
1	2' 8 PIN MINI DIN/M TO 8 PIN MINI DIN/N	SHOP	Apr 7, 2008	Apr 29, 2008
	CONTROL CABLE FOR DN-1800F			
1	15 PIN D-TYPE/F TO 15 PIN D-TYPE/F	SHOP	Apr 7, 2008	Apr 29, 2008
	CONTROL FOR LAYLA 3G			
2	USB/B-M TO USB/A-M	SHOP	Apr 7, 2008	Apr 29, 2008
6	PATCH CABLE NL4	IN SPACE	Apr 7, 2008	Apr 29, 2008
3	10' NL4/M TO NL4/M for E0s	SHOP	Apr 7, 2008	Apr 29, 2008
2	35' OR GREATER NL4/M TO NL4/M for subs NL2 ok	SHOP	Apr 7, 2008	Apr 29, 2008
6	NEMA L5-15/F TO NL4/F adaptors	SHOP	Apr 7, 2008	Apr 29, 2008
6	25' NL4/F to NL4/F (NL2 is ok)	SHOP	Apr 7, 2008	Apr 29, 2008
4	50' NL4/F to NL4/F (NL2 is ok)	SHOP	Apr 7, 2008	Apr 29, 2008
11	IEC/F TO NEMA 5-15/M (IEC)	SHOP	Apr 7, 2008	Apr 29, 2008

The Trojan Women
 Catawba Theatre - NCSA
 April 1-29, 2008

Shop Order

PSE: Christopher C. Kulesa
 313.655.6554 cell
 Opens April 18, 2008

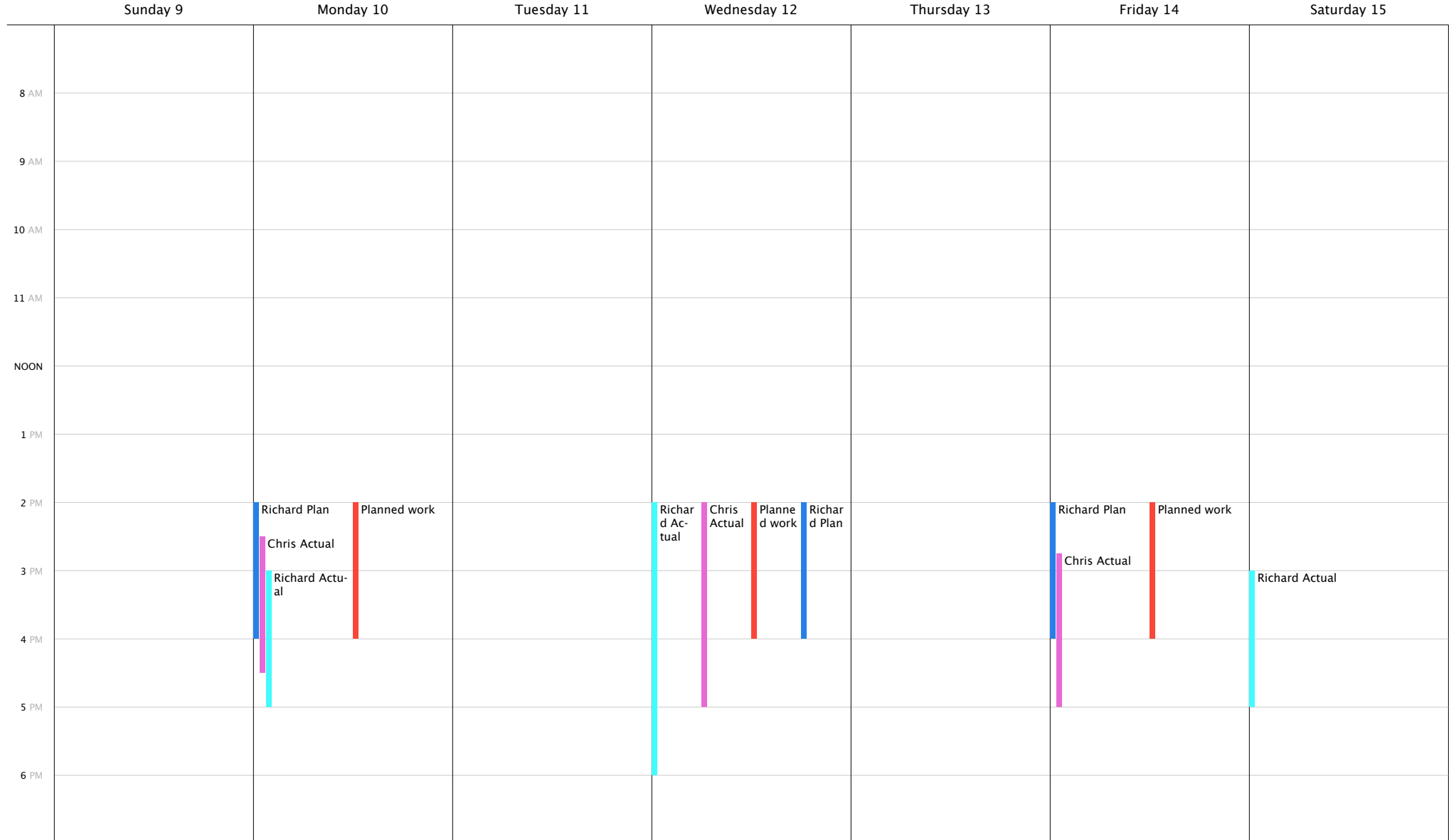
2	50' NEMA 5-15/M TO NEMA 5-15/F	SHOP	Apr 7, 2008	Apr 29, 2008
	Edison			
3	POWER STRIPS	SHOP	Apr 7, 2008	Apr 29, 2008
1	50' or greater CAT5e w/ RJ45 Ends	SHOP	Apr 7, 2008	Apr 29, 2008
7	NL4 Barrels	Order or house	Apr 7, 2008	Apr 29, 2008
3	Twist-Loc to 1/4M	SHOP	Apr 7, 2008	Apr 29, 2008
6	NL4/F to Twist-Loc F adaptor	SHOP	Apr 7, 2008	Apr 29, 2008
3	Twist-Loc M to 1/4M	SHOP	Apr 7, 2008	Apr 29, 2008
4	Twist-Loc F	SHOP	Apr 7, 2008	Apr 29, 2008
ClearCom				
QTY.	ITEM	NOTES	DATE OUT	DATE IN
10	ClearCom Headset	SHOP	Apr 7, 2008	Apr 29, 2008
1	ClearCom Handset	SHOP	Apr 7, 2008	Apr 29, 2008
10	ClearCom CC-501 Single Channel Beltpack	SHOP	Apr 7, 2008	Apr 29, 2008
1	Arena ClearCom 2ch. Base Station	HOUSE		
1	ClearCom Base Station Multi-Pin Cable	HOUSE		
5	25' ClearCom XLR	SHOP	Apr 7, 2008	Apr 29, 2008
2	50' ClearCom XLR	SHOP	Apr 7, 2008	Apr 29, 2008
3	50'+ ClearCom XLR	SHOP	Apr 7, 2008	Apr 29, 2008
2	ClearCom Squak-Box	SHOP	Apr 7, 2008	Apr 29, 2008
1	75'+ ClearCom XLR	SHOP	Apr 7, 2008	Apr 29, 2008
Misc.				
QTY.	ITEM	NOTES	DATE OUT	DATE IN
5	PP RF Radio w/ Charging Station	HOUSE	Apr 7, 2008	Apr 29, 2008
3	Gaff Tape	DES	Apr 7, 2008	Apr 29, 2008
1	Board Tape	DES	Apr 7, 2008	Apr 29, 2008
1	Sharpie	PSE - CK	Apr 7, 2008	Apr 29, 2008
2	USB thumb drive for M7CL	Sound Dept.	Apr 7, 2008	Apr 29, 2008
1	Headphone w/ 1/8 to 1/4 adaptor	SHOP	Apr 7, 2008	Apr 29, 2008
	Tie line - Where ever we can find it	Lighting	Apr 7, 2008	Apr 29, 2008

March 9 to March 15, 2008

Week 10

- Chris Planned
- Leo Actual
- Leo Planned
- Richard Actual ■ Trojan Women
- Richard Planned ■ Chris Actual

March 2008							April 2008						
S	M	T	W	T	F	S	S	M	T	W	T	F	S
						1			1	2	3	4	5
2	3	4	5	6	7	8	6	7	8	9	10	11	12
9	10	11	12	13	14	15	13	14	15	16	17	18	19
16	17	18	19	20	21	22	20	21	22	23	24	25	26
23	24	25	26	27	28	29	27	28	29	30			
30	31												

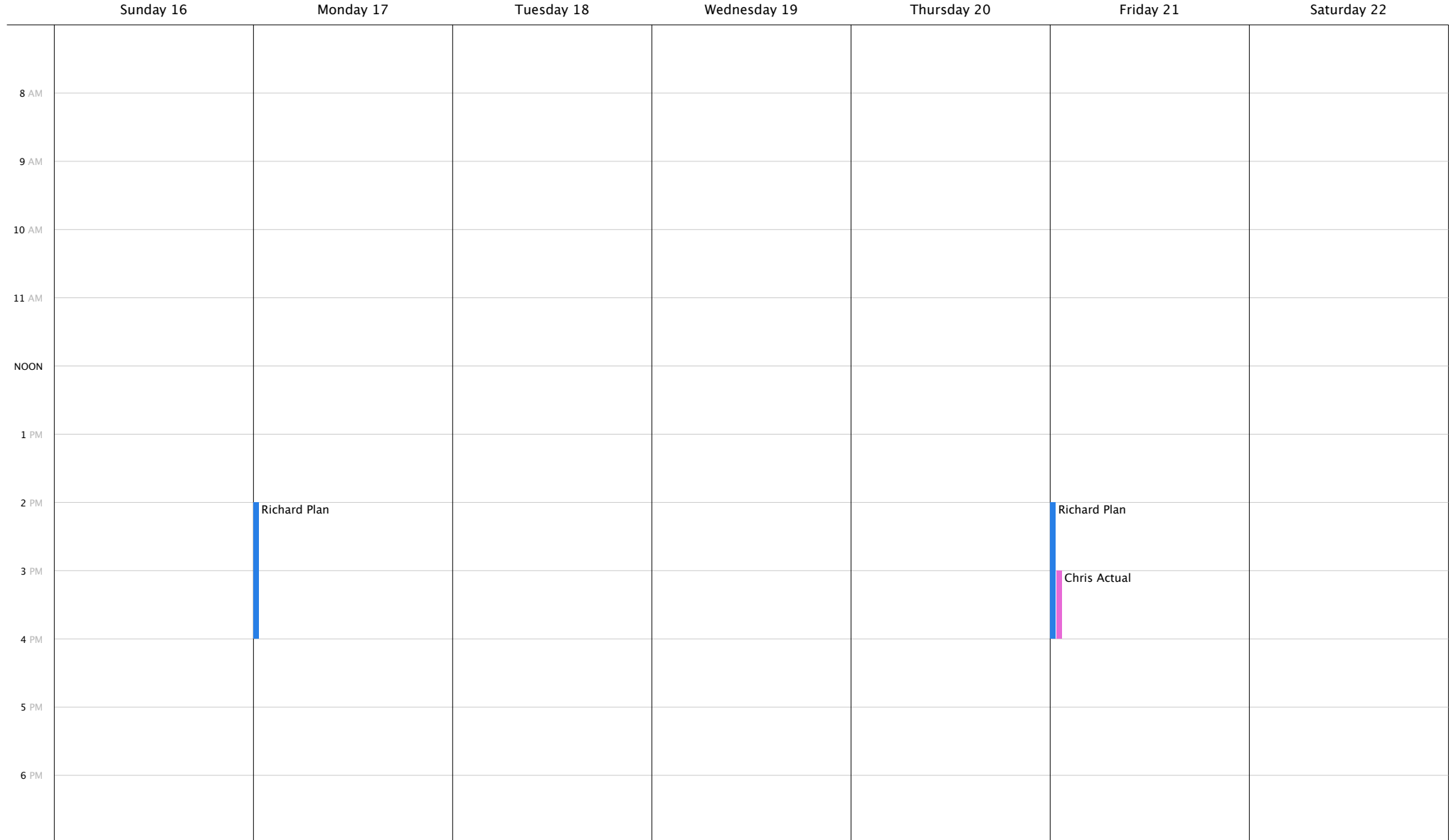


March 16 to March 22, 2008

Week 11

- Chris Planned
- Leo Actual
- Leo Planned
- Richard Actual ■ Trojan Women
- Richard Planned ■ Chris Actual

March 2008							April 2008						
S	M	T	W	T	F	S	S	M	T	W	T	F	S
						1			1	2	3	4	5
2	3	4	5	6	7	8	6	7	8	9	10	11	12
9	10	11	12	13	14	15	13	14	15	16	17	18	19
16	17	18	19	20	21	22	20	21	22	23	24	25	26
23	24	25	26	27	28	29	27	28	29	30			
30	31												

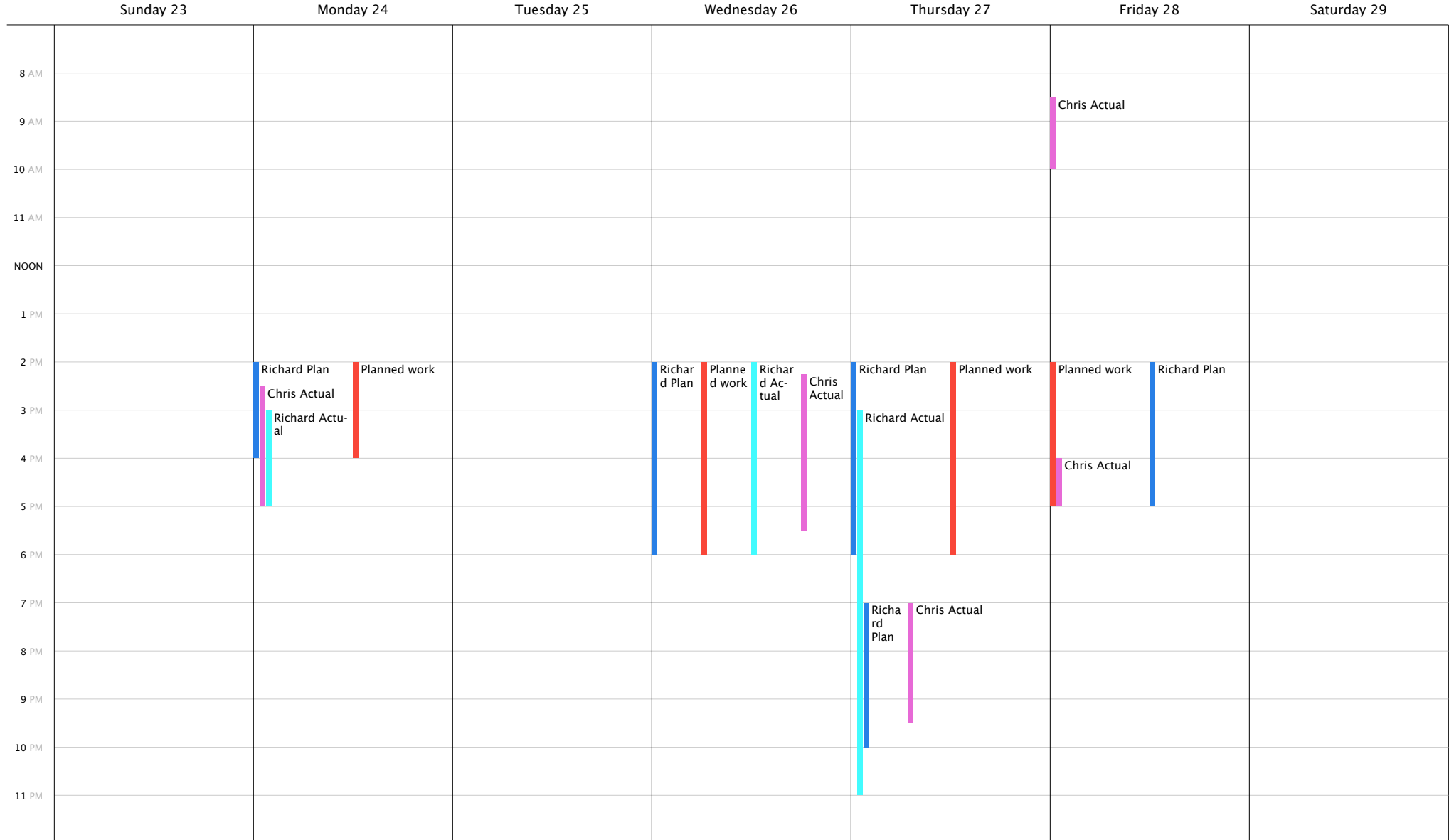


March 23 to March 29, 2008

Week 12

- Chris Planned
- Leo Actual
- Leo Planned
- Richard Actual ■ Trojan Women
- Richard Planned ■ Chris Actual

March 2008							April 2008						
S	M	T	W	T	F	S	S	M	T	W	T	F	S
						1			1	2	3	4	5
2	3	4	5	6	7	8	6	7	8	9	10	11	12
9	10	11	12	13	14	15	13	14	15	16	17	18	19
16	17	18	19	20	21	22	20	21	22	23	24	25	26
23	24	25	26	27	28	29	27	28	29	30			
30	31												

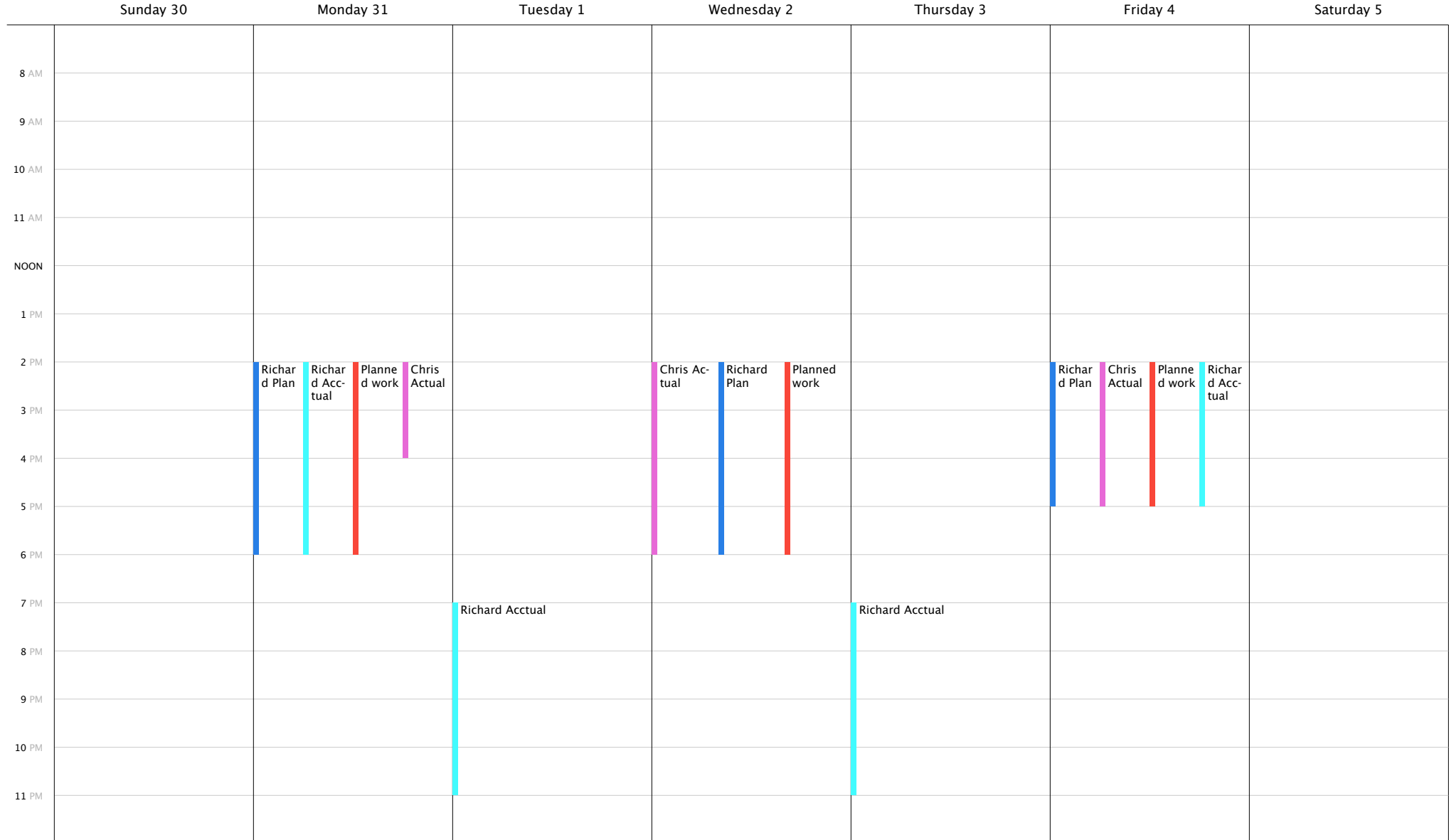


March 30 to April 5, 2008

Week 13

- Chris Planned
- Leo Actual
- Leo Planned
- Richard Actual ■ Trojan Women
- Richard Planned ■ Chris Actual

March 2008							April 2008							
S	M	T	W	T	F	S	S	M	T	W	T	F	S	
						1				1	2	3	4	5
2	3	4	5	6	7	8	6	7	8	9	10	11	12	
9	10	11	12	13	14	15	13	14	15	16	17	18	19	
16	17	18	19	20	21	22	20	21	22	23	24	25	26	
23	24	25	26	27	28	29	27	28	29	30				
30	31													

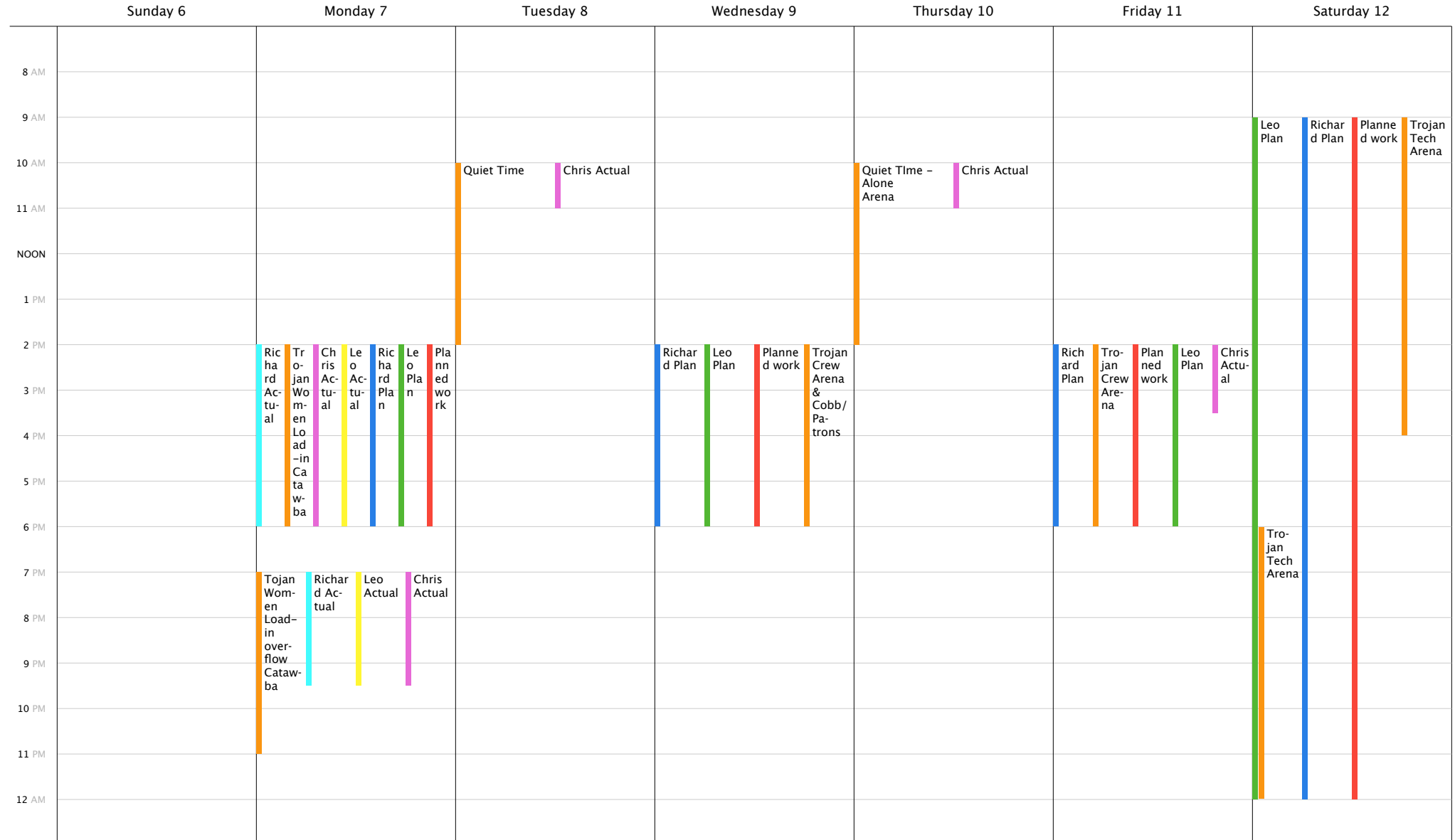


April 6 to April 12, 2008

Week 14

- Chris Planned
- Leo Actual
- Leo Planned
- Richard Actual ■ Trojan Women
- Richard Planned ■ Chris Actual

April 2008							May 2008						
S	M	T	W	T	F	S	S	M	T	W	T	F	S
	1	2	3	4	5				1	2	3		
6	7	8	9	10	11	12	4	5	6	7	8	9	10
13	14	15	16	17	18	19	11	12	13	14	15	16	17
20	21	22	23	24	25	26	18	19	20	21	22	23	24
27	28	29	30				25	26	27	28	29	30	31

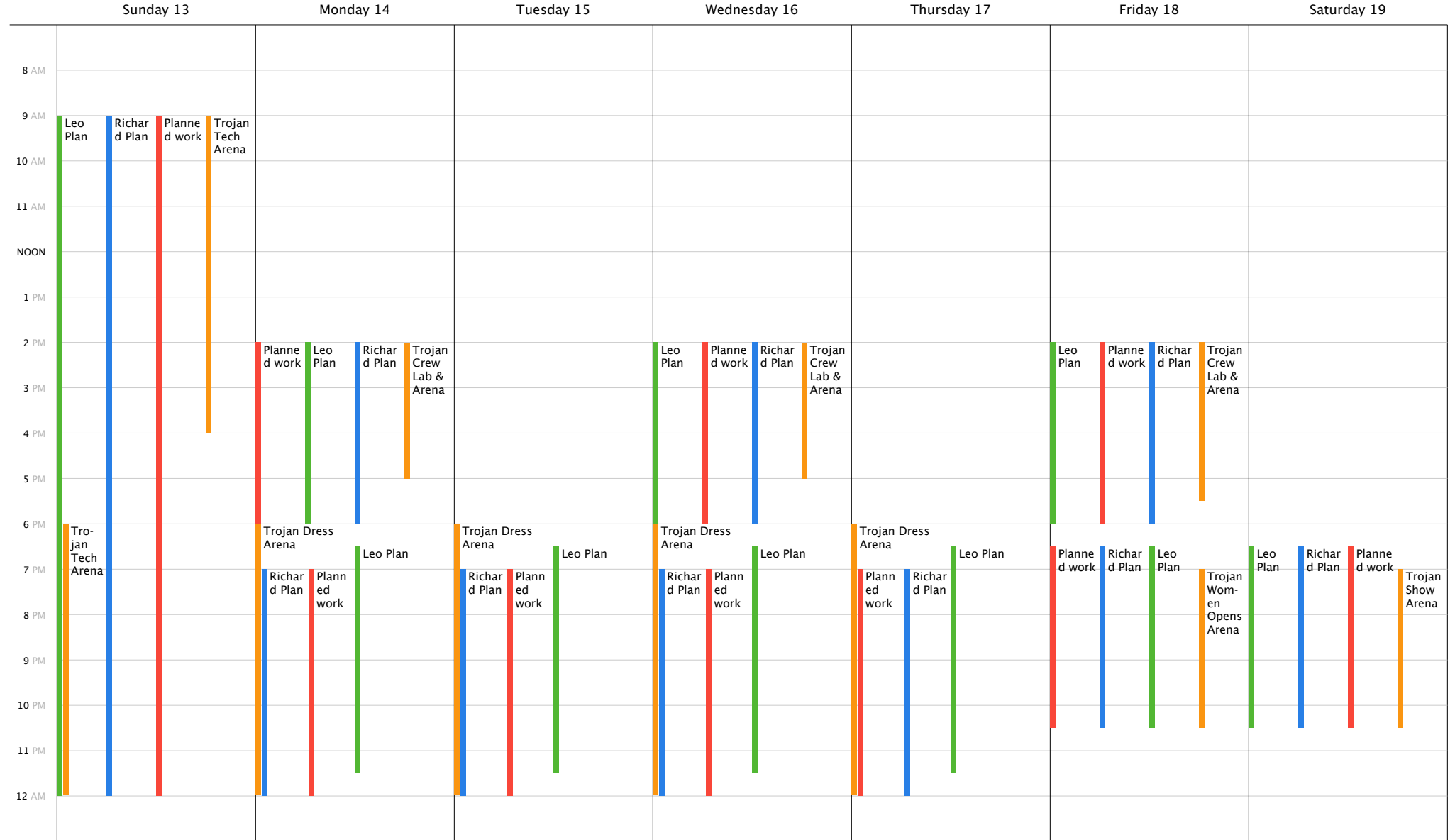


April 13 to April 19, 2008

Week 15

- Chris Planned
- Leo Actual
- Leo Planned
- Richard Actual ■ Trojan Women
- Richard Planned ■ Chris Actual

April 2008							May 2008						
S	M	T	W	T	F	S	S	M	T	W	T	F	S
	1	2	3	4	5				1	2	3		
6	7	8	9	10	11	12	4	5	6	7	8	9	10
13	14	15	16	17	18	19	11	12	13	14	15	16	17
20	21	22	23	24	25	26	18	19	20	21	22	23	24
27	28	29	30				25	26	27	28	29	30	31

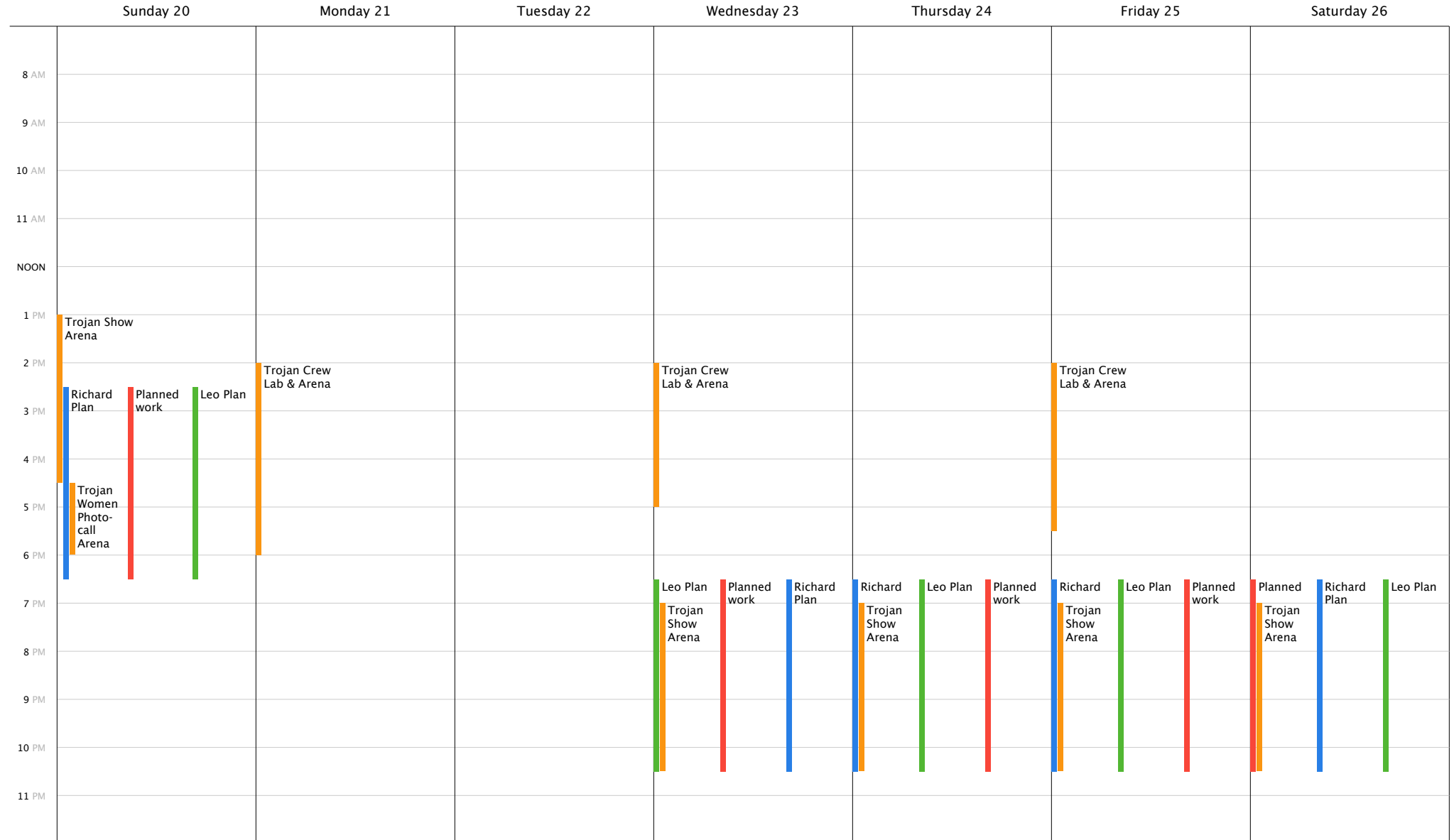


April 20 to April 26, 2008

Week 16

- Chris Planned
- Leo Actual
- Leo Planned
- Richard Actual ■ Trojan Women
- Richard Planned ■ Chris Actual

April 2008							May 2008						
S	M	T	W	T	F	S	S	M	T	W	T	F	S
	1	2	3	4	5					1	2	3	
6	7	8	9	10	11	12	4	5	6	7	8	9	10
13	14	15	16	17	18	19	11	12	13	14	15	16	17
20	21	22	23	24	25	26	18	19	20	21	22	23	24
27	28	29	30				25	26	27	28	29	30	31



April 27 to May 3, 2008

Week 17

- Chris Planned
- Leo Actual
- Leo Planned
- Richard Actual ■ Trojan Women
- Richard Planned ■ Chris Actual

April 2008							May 2008						
S	M	T	W	T	F	S	S	M	T	W	T	F	S
	1	2	3	4	5					1	2	3	
6	7	8	9	10	11	12	4	5	6	7	8	9	10
13	14	15	16	17	18	19	11	12	13	14	15	16	17
20	21	22	23	24	25	26	18	19	20	21	22	23	24
27	28	29	30				25	26	27	28	29	30	31

